

METRIC SOCKET FLAT HEAD CAP SCREWS

Dimensions

Threads: ANSI B1.13M, ISO 262 (coarse series only)
Applicable or Similar Specification: DIN ENISO10642
General Note: Flat, countersunk head cap screws and button head cap screws are designed and recommended for moderate fastening applications: machine guards, hinges, covers, etc. They are not suggested for use in critical high strength applications where socket head cap screws should be used.

NOTES

1. Material: ASTM F835M
2. Dimensions: B18.3.5M
3. Property Class: 12.9
4. Hardness: Rc 38-43 (alloy steel)
5. Tensile Stress: 1040MPa
6. Shear Stress: 630 MPa
7. Yield Stress: 945 MPa
8. Sizes: For sizes up to and including M20, head angle shall be 92°/90°. For larger sizes head angle shall be 62°/60°.
9. Thread Class: 4g 6g

Viewmold company is founded in Shenzhen, China in 1999. Viewmold company is socket flat head cap screw supplier and is committed to providing reliable, safe and economic screws for global customers. Our screws have superior strength and advanced design Joint reliability and safety with maximum strength and fatigue resistance.

VIEWMOLDS socket flat head cap screws strength levels achieve to 170,000 psi.

Our screws services features:

1:We provide services for global customers.

2:Our screws has high quality.

3:We adopt excel steel for our screw product.

4:Our company has complete quality inspection system that includes material composition, hardness, shape, size.

5:We provide reliable and friendly services for global customers, even you need only a piece of screw. If you have any need for screws, could you please contact us as sales@viewmold.com



Our ship services:

1:Quilkliest UPS, TNT, Fedex
timeline: 3 - 5 days.

Ship cost:USD20 + USD18/KG

2:Quilklier UPS, TNT, Fedex
timeline: 7 - 10 days.

Ship cost:USD10 + USD9/KG

3:Air ship:

timeline: 7 - 10 days.

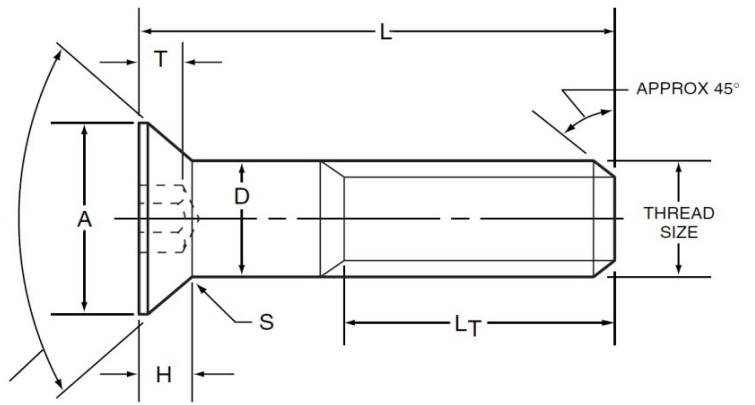
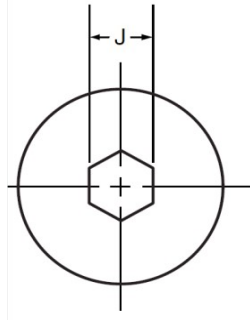
Ship cost:USD100 + USD5/KG

4:Ocean ship:

timeline: 35 - 45 days.

Ship cost:USD200 + USD0.5/KG





Head Angle See Note

nominal screw length	nominal screw diameter
	M1.6 thru M24
	tolerance on lgth., mm
Up to 16 mm, incl.	±0.3
Over 16 to 60 mm, incl.	±0.5
Over 60 mm	±0.8

Dimensions

Application Data

nom. Thread size	pitch	A max.***	D max.***	H ret.	T min.	S ref.	L _T min.	J nom.	recommended seating torque**	
									plain	
									N-m	in-lbs.
M1.6	0.35	3.00	1.60	1.00				1.2		
M2	0.40	4.00	2.00	1.2				1.3		
M2.5	0.45	5.00	2.50	1.5				1.5		
M3	0.50	6.72	3	1.7	1.10	0.50	18	2	1.2	11
M4	0.70	8.96	4	2.3	1.55	0.70	20	2.5	2.8	25
M5	0.80	11.20	5	2.8	2.05	0.70	22	3	5.5	50
M6	1.00	13.44	6	3.3	2.25	0.85	24	4	9.5	85
M8	1.25	17.92	8	4.4	3.20	1.20	28	5	24	210
M10	1.50	22.40	10	5.5	3.80	1.50	32	6	47	415
M12	1.75	24.00	12	6.5	4.35	1.85	36	8	82	725
M14	2.00	27.00	14	6.5	4.50			10		
M16	2.00	30.00	16	7.5	4.89	1.85	44	10	205	1800
M18	2.50	33.00	18	8.0	5.20			12		
M20	2.50	36.00	20	8.5	5.45	1.85	52	12	400	3550
M22	2.50	36.00	22		8.20			14		
*M24	3.00	38.00	24	14.0	10.15	2.20	60	14	640	5650

All dimensions in millimeters.

***Maximum to theoretical sharp corner

*Non-stock Diameter

**Torque calculated to induce 420 MPa in the screw threads

